



www.sprayfoamatdow.com

LEADERS OF THE PAK FROTH-PAK™ INSULATION AND FROTH-PAK™ FOAM SEALANT KITS

Sealing and insulating the gaps and cracks around the home can save up to 20% on heating and cooling costs.* As leaders in the fight to block air leaks, FROTH-PAK™ foam kits quickly expand to fill cavities, penetrations and cracks.**



PACKED WITH BENEFITS

- Helps block entry of unwanted air, moisture, insects, dust and noise
- Two-component polyurethane foam becomes tack-free in seconds
- Packaged in easy-to-handle, self-contained, portable containers
- Bonds to wood, rigid foam, masonry, metal, drywall and more
- Wide selection of anti-crossover nozzles
- Temperature indicator for helping achieve consistent quality

®™Trademark of The Dow Chemical Company ("Dow") or an affiliated company of Dow

*Source: www.energystar.gov

**Consult the instructions and Material Safety Data Sheets carefully before use.

Air infiltration accounts for 25%-40% of a home's energy loss.* FROTH-PAK™ products can fill the void.

FROTH-PAK™ Foam Sealant Kits

Used primarily as an air sealant, FROTH-PAK™ Foam Sealant is suited for gaps larger than 2" in:

- Wall/attic penetrations
- Electrical, mechanical and plumbing penetrations
- Attic hatches
- Around pipes within wall cavities

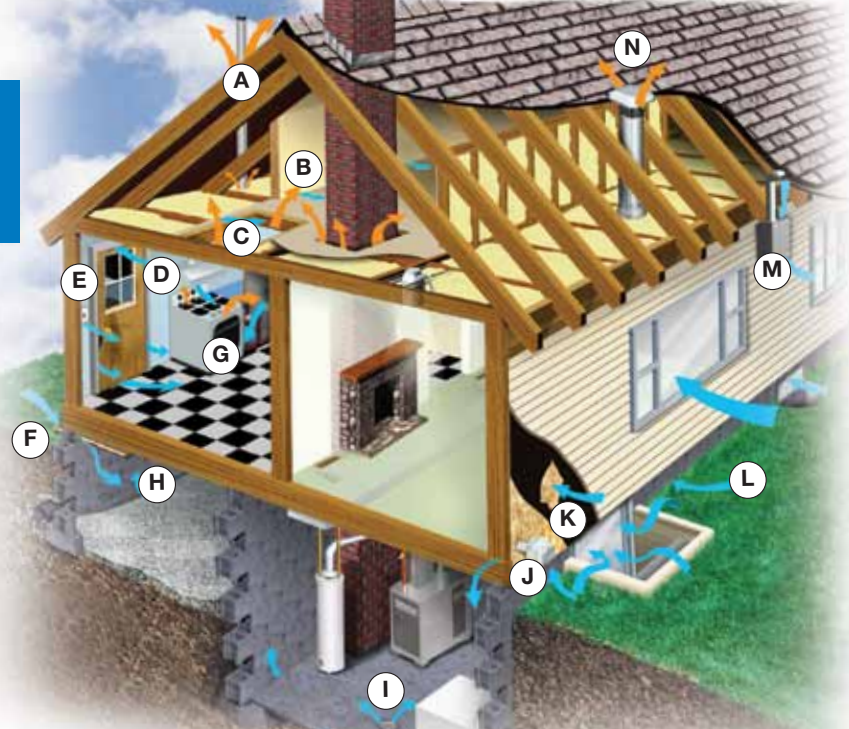
FROTH-PAK™ Foam Insulation Kits (U.S. only)

With a Class-A fire rating (flame spread index of 25 or less), FROTH-PAK™ Foam Insulation can be used in a variety of applications:

- Stud wall cavities
- Rim or band joists
- Crawl space walls and ceilings
- Attic ductwork
- Plumbing wall pipe insulation and support

*Source: www.energystar.gov

**Before applying, turn off electrical power to that area of the home. Be sure that wiring has protective covering. Never apply foam to exposed wiring or inside an electrical box.



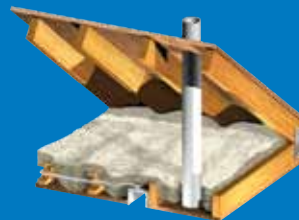
TYPICAL SOURCES OF AIR LEAKS

- | | | |
|--|--|--|
| A Plumbing stack vent | F Outdoor faucet | K Holes and tears in housewrap/vapor barrier |
| B Interior partitions | G Chases/soffits/drop ceilings | L Sill plate |
| C Attic hatch | H Cracks/separation in foundation wall/basement floor | M Entry points for electrical service, TV cable and telephone |
| D Kitchen fan vent | I Floor drain/weeping tile | N Bathroom fan vent |
| E Light fixtures/electrical outlets (outside perimeter of electrical boxes)** | J Dryer vent | |

THE OTHERS? NOT!



Compressed fiberglass loses R-value. When wet, it not only loses R-value, it can provide suitable conditions for mold and mildew growth.



Cellulose insulation batts can leave gaps around pipe penetrations. Dry-blown cellulose can settle, creating additional air pockets. Both can absorb moisture and provide nutrients for mold and mildew.

NOTICE: No freedom from any patent owned by Dow or others is to be inferred. Because use conditions and applicable laws may differ from one location to another and may change with time, Customer is responsible for determining whether products and the information in this document are appropriate for Customer's use and for ensuring that Customer's workplace and disposal practices are in compliance with applicable laws and other government enactments. The product shown in this literature may not be available for sale and/or available in all geographies where Dow is represented. The claims made may not have been approved for use in all countries or regions. Dow assumes no obligation or liability for the information in this document. References to "Dow" or the "Company" mean the Dow legal entity selling the products to Customer unless otherwise expressly noted. **NO EXPRESS WARRANTIES ARE GIVEN EXCEPT FOR ANY APPLICABLE WRITTEN WARRANTIES SPECIFICALLY PROVIDED BY DOW. ALL IMPLIED WARRANTIES INCLUDING THOSE OF MERCHANTABILITY AND FITNESS FOR A PARTICULAR PURPOSE ARE EXPRESSLY EXCLUDED.**

Dow Polyurethane Foam Insulation and Sealants

CAUTION: When cured, these products are combustible and will burn if exposed to open flame or sparks from high-energy sources. Do not expose to temperatures above 240°F (116°C). For more information, consult MSDS, call Dow at 1-866-583-BLUE (2583) or contact your local building inspector. In an emergency, call 1-989-636-4400 in the U.S. or 1-519-339-3711 in Canada.

FROTH-PAK™ spray polyurethane foam contains isocyanate, hydrofluorocarbon blowing agent and polyol. Read the instructions and Material Safety Data Sheets carefully before use. Wear protective clothing (including long sleeves), gloves, goggles or safety glasses, and proper respiratory protection. Supplied air or an approved air-purifying respirator equipped with an organic vapor sorbent and a P100 particulate filter may be required to maintain exposure levels below ACGIH, OSHA, WEEL or other applicable limits. Provide adequate ventilation. Contents under pressure.

Building and/or construction practices unrelated to building materials could greatly affect moisture and the potential for mold formation. No material supplier including Dow can give assurance that mold will not develop in any specific system.

www.sprayfoamatdow.com

THE DOW CHEMICAL COMPANY . Dow Building Solutions . 200 Larkin . Midland, MI 48674
DOW CHEMICAL CANADA ULC . Dow Building Solutions . Suite 2100 . 450 - 1st St., SW . Calgary, AB T2P 5H1

For Technical Information: 1-866-583-BLUE (2583) (English) . 1-800-363-6210 (French)

For Sales Information: 1-800-232-2436 (English) . 1-800-565-1255 (French)

a proud partner of



Printed in U.S.A.

Form No. 179-07393X-0311P&M
178-00456X-0311P&M

®™Trademark of The Dow Chemical Company ("Dow") or an affiliated company of Dow
Habitat for Humanity is a registered service mark owned by Habitat for Humanity International

